

ROMAN C. ESPARZA
RANCH & COUNTRY CRE

89
a c r e s

Pflugerville/Manor

17618 N. FM 973 | Manor, TX

\$7.12M | \$80,000 per acre



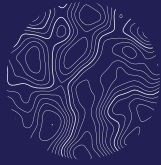


TABLE OF CONTENTS

03

property highlights

04

property map

05

photos

06

map



ROMAN C. ESPARZA, BROKER
Roman@RealtyExecutives.com
Mobile: (512) 745-7777
13740 Research Blvd, Suite D-3
Austin, TX 78750

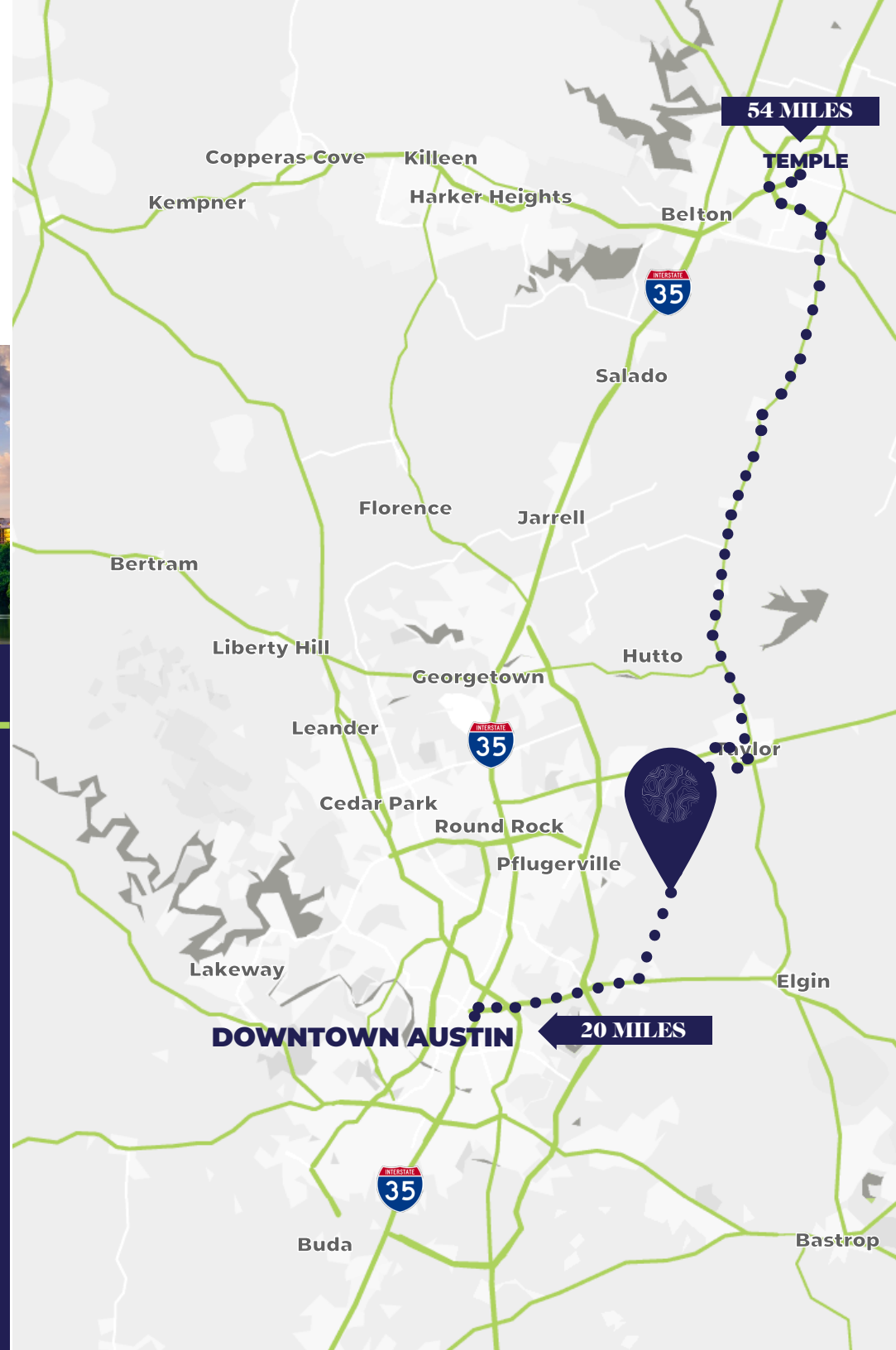


Property Highlights



\$7.12M | \$80,000 per acre

- » Located in Travis County
- » 8 miles south of Samsung site
- » 785' of frontage on FM 973
- » Pflugerville ISD
- » Oncor Electric
- » Aqua Water Supply Corporation
- » No pipelines
- » No transmission lines
- » 15 miles from Tesla
- » Cell tower lease

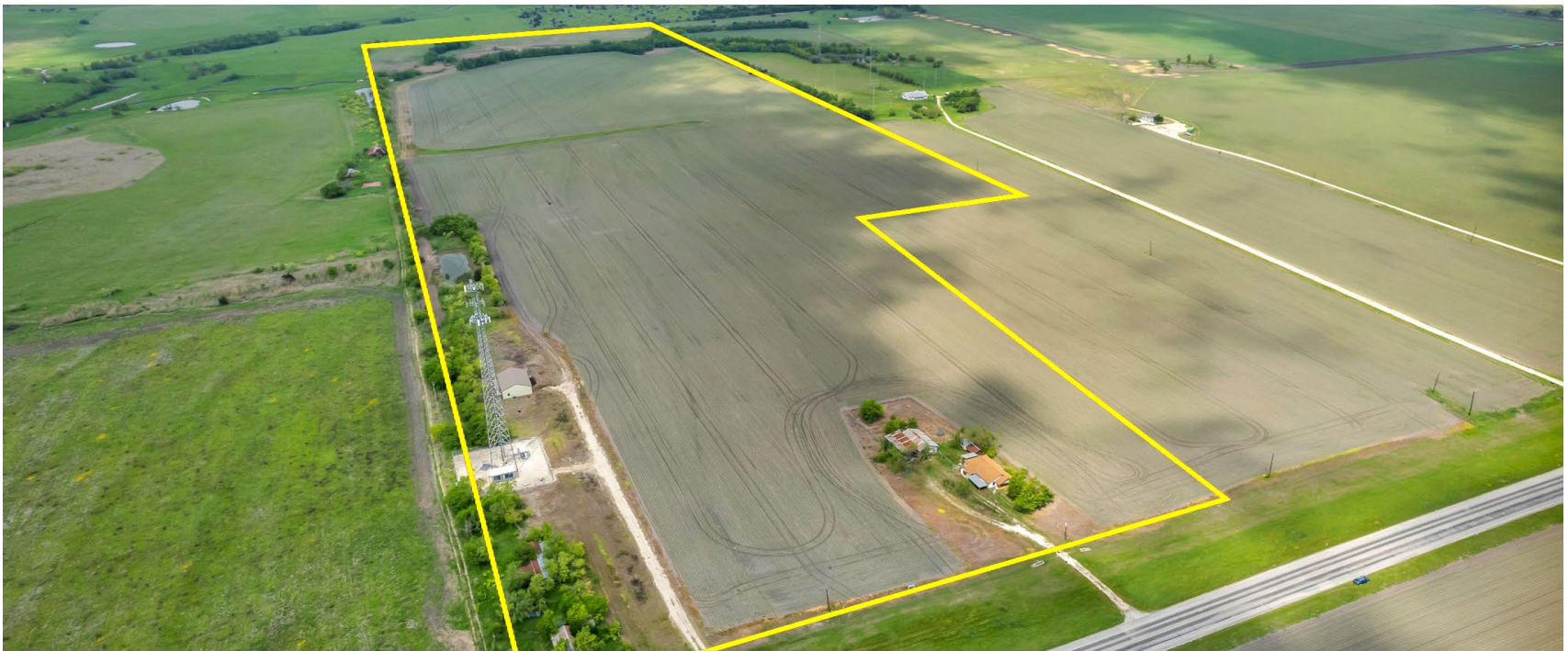




MAPRIGHT LINK

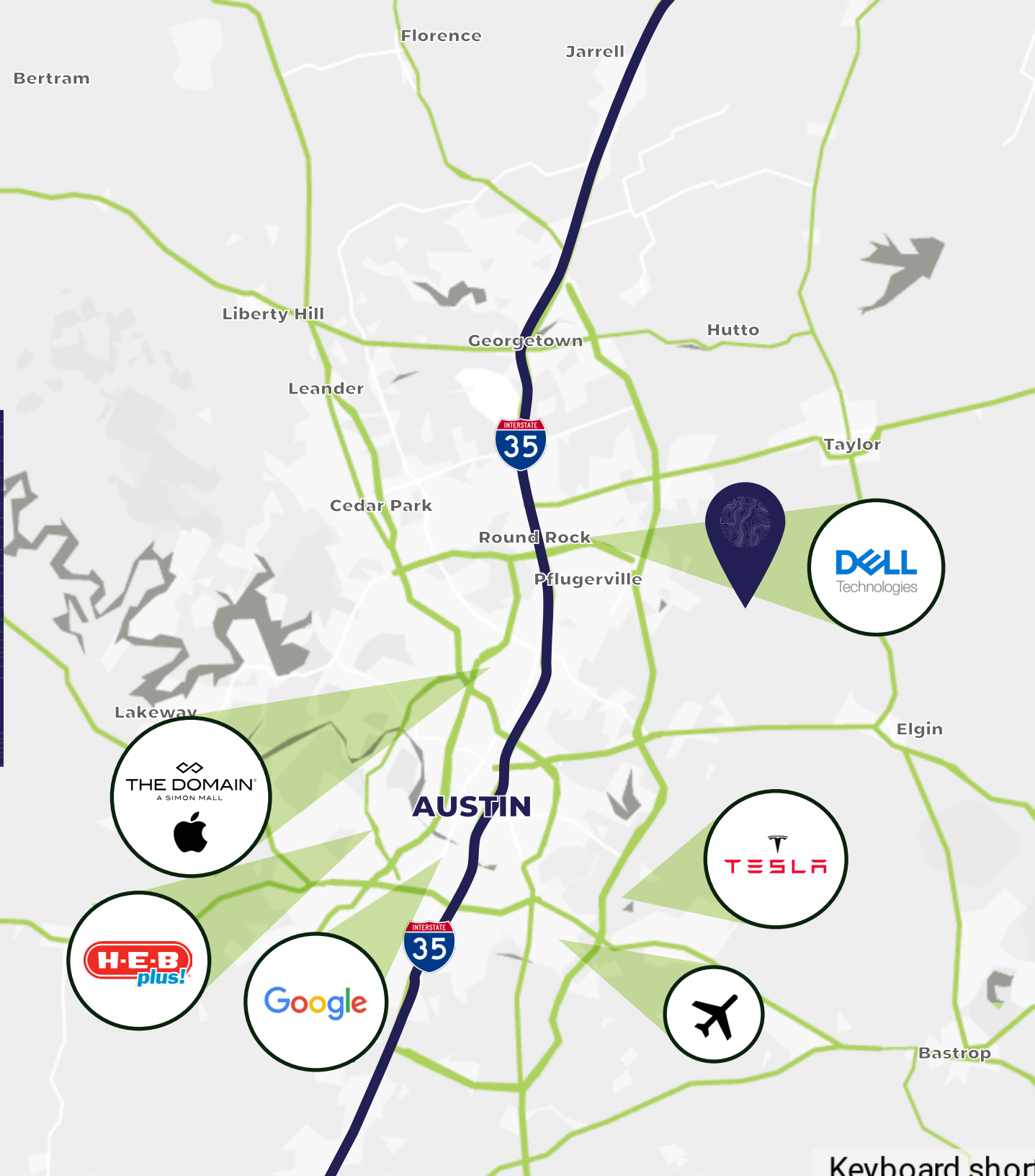


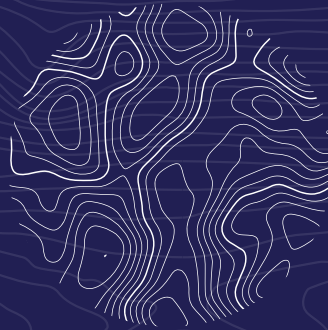
Photos



Travel Times

- » 22 Mins to Tesla Giga Texas
- » 25 Mins to Austin
- » 25 Mins to The Domain
- » 25 Mins to Austin Bergstrom Intl. Airport
- » 26 Mins to H.E.B. Plus
- » 30 Mins to Apple Campus/Dallas Dr.
- » 30 Mins to Google
- » 45 Mins to Dell





ROMAN C. ESPARZA

RANCH & COUNTRY CRE

ROMAN C. ESPARZA, BROKER

Roman@RealtyExecutives.com

Mobile: (512) 745-7777

13740 Research Blvd. Suite D-3

Austin, TX. 78750

